

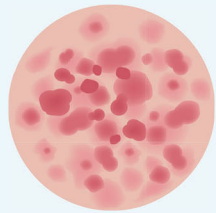
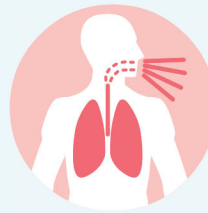
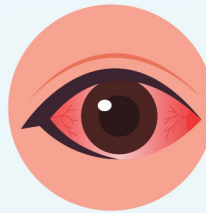
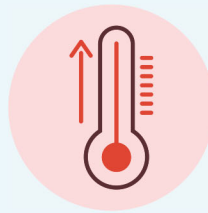
Measles

MORE THAN A RASH

Measles can be dangerous, especially for children.

- About 1 in 4 will be hospitalized
- 1 or 2 of 1000 people with measles will die, even with the best care

Symptoms usually include:

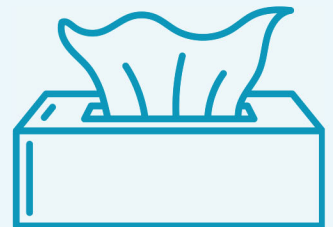


- High fever
- Red, watery eyes
- Runny nose
- Cough
- Rash (starts on the face & spreads)

Measles spreads through the air and can live for up to 2 hours after a person with measles leaves a room

HOW CAN YOU STAY HEALTHY?

- Wash your hands often with soap and water
- Cover your mouth when you cough or sneeze
- Be aware of where measles is going around
- See a medical provider if you've been exposed
- Talk to your medical provider about vaccines



**For More Information,
visit www.siphidaho.org.**



**Southeastern
Idaho Public Health**